



Introducing Proposals for Maggie's Solar Farm

Presentation slides to aid video-meeting

March 2020

Confidential

Introducing Low Carbon



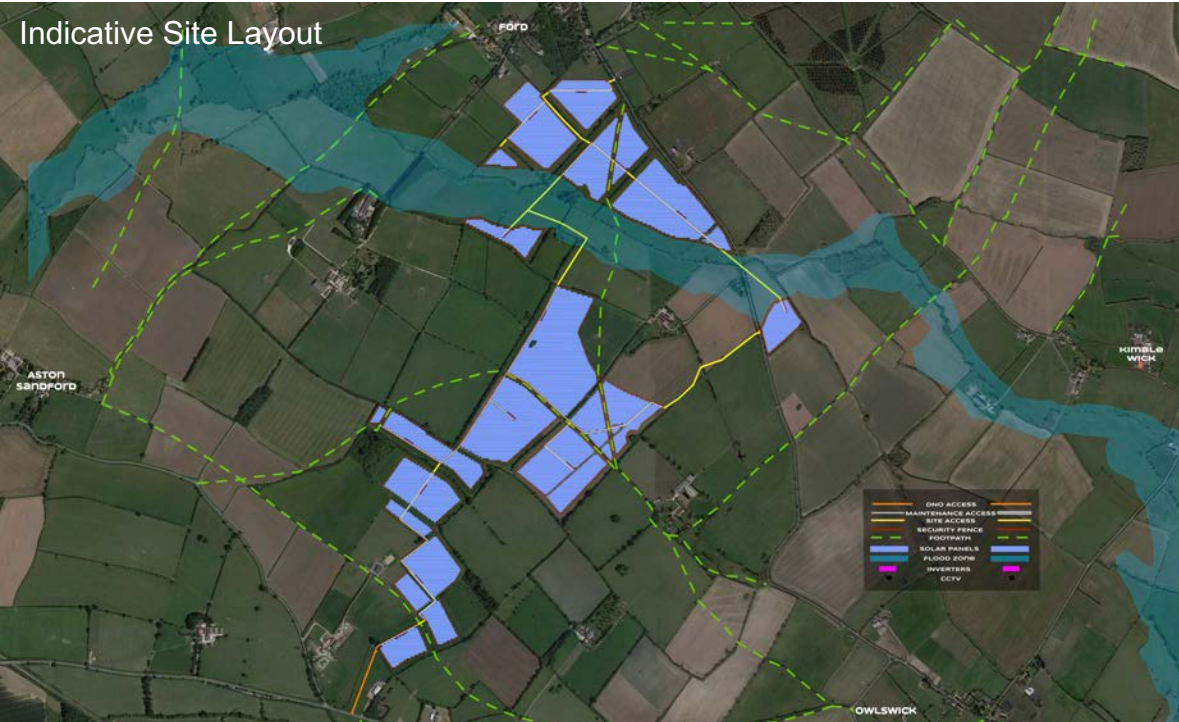
- British-owned investment and asset management company.
- Successfully developed over 322 MW of UK solar projects, and currently manages in excess of 1 gigawatt (GW) of renewable energy assets across more than 100 sites in the UK.
- Certified B Corporation™



Low Carbon's goal is a genuinely low carbon future with environmental stewardship and collaboration with local communities at the heart of its approach.

Maggie's Solar Farm

The site is located approximately 6.4km to the south west of Aylesbury, 2.2km to the south east of Haddenham and 4.1km to the north west of Princes Risborough



- Capacity of up to 49.9 megawatts (MW) of clean renewable energy
- Approximately 88 hectares (217 acres)
- Planning permission for 40 years
- Land classification, Grade 4 (Poor Quality Agricultural Land), with smaller area of Grade 3 (Good to Moderate Quality Agricultural Land) to the north of the site
- Biodiversity enhancements
- Keeping Public Rights of Way open during construction

Timescales



- Waiting for feedback from Council regarding EIA screening opinion

About our consultation

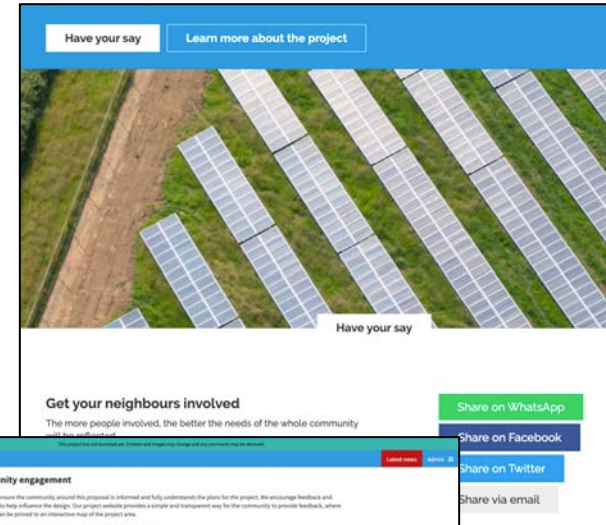
Consultation Period: Monday 22nd March 2021 – Monday 12th April 2021

We want to give the community an opportunity to provide their views before we submit a planning application. We will be holding a series of consultation activities to enable the community to have their say.

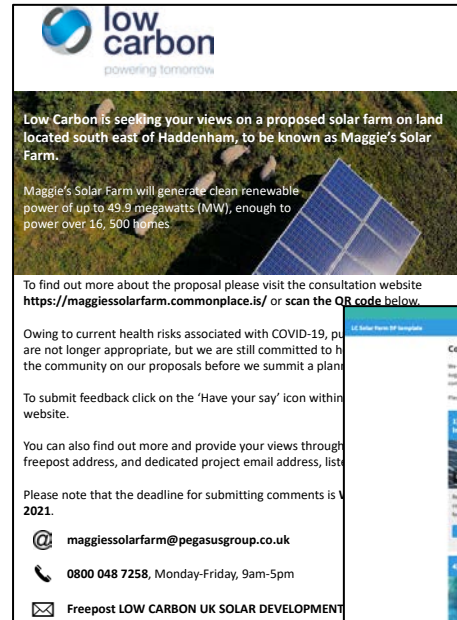
- Local Newspaper
- Posting out project information leaflets and feedback form to local residents.
- Online digital engagement platform.
- For those without digital access, we will encourage feedback via:
 - Freepost address for people to write in: **Freepost LOW CARBON UK SOLAR DEVELOPMENT**
 - Freephone telephone information line
 - Dedicated project email



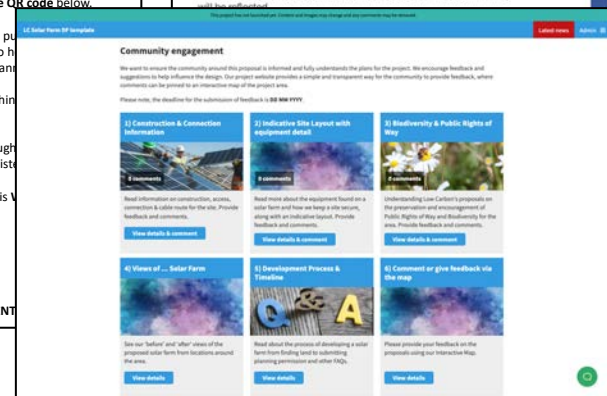
Project website – welcome page



Project website – information tiles



Newspaper advert



Your questions